

File Backup Overview

Backup Modes

- Online: backup directly to RingStor Vault
- Local: backup to local storage device
- Local + Replication: backup to local storage device, then replicate to a cloud of choice
- Amazon S3: backup to Amazon S3 cloud storage
- Microsoft Azure: backup to Microsoft Azure cloud storage
- Huawei Cloud: backup to Huawei cloud storage

Backup Type

- Full: all files are backed up
- Incremental: files modified since last backup are backed up

Base Line Backup

- For online backup mode, backup to local device first, import backup from device to RingStor Vault

Create New DataSet

File Backup DataSet is a backupset that contains files and folders from DataAgent

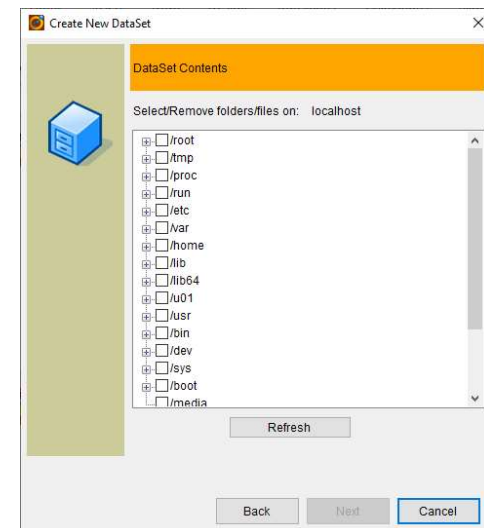
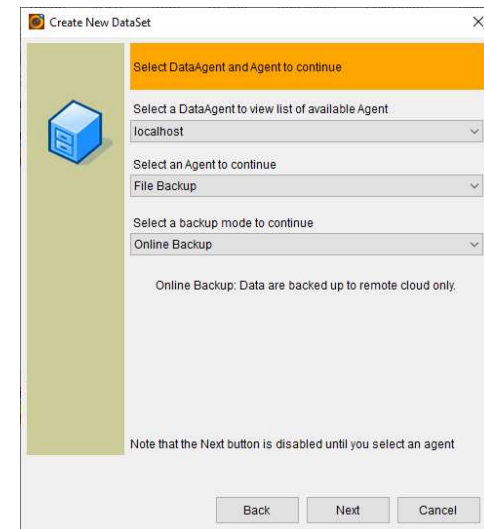
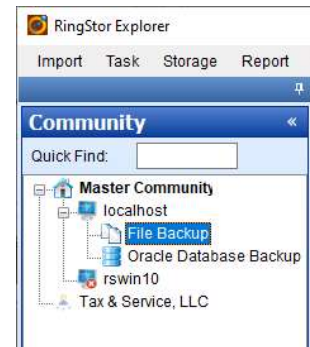
Step 1 – Log into RingStor Explorer

Step 2 – On left pane, select community and DataAgent

Step 3 – Right click File Backup under the DataAgent, click Create New DataSet

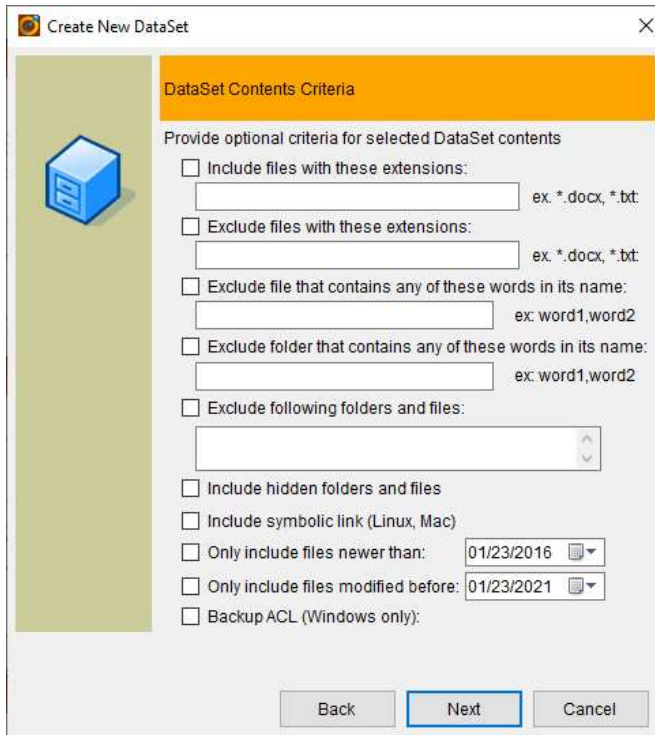
Step 4 – Select backup mode

Step 5 – Select files and folders to be backed up



Create New DataSet

Step 6 – Set up filters



Create New DataSet

DataSet Contents Criteria

Provide optional criteria for selected DataSet contents

- Include files with these extensions: ex. *.docx, *.txt
- Exclude files with these extensions: ex. *.docx, *.txt
- Exclude file that contains any of these words in its name: ex. word1,word2
- Exclude folder that contains any of these words in its name: ex. word1,word2
- Exclude following folders and files:
- Include hidden folders and files
- Include symbolic link (Linux, Mac)
- Only include files newer than:
- Only include files modified before:
- Backup ACL (Windows only):

Notes:

Exclude following folders and files: enter full path to exclude certain file or folder

Include hidden folders and files: system hidden files and folders are not picked up for backup unless this is enabled

Schedule Backup

Recurring incremental backup is essential to protect files

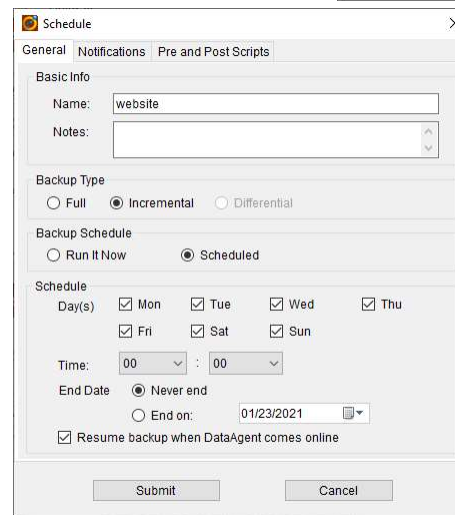
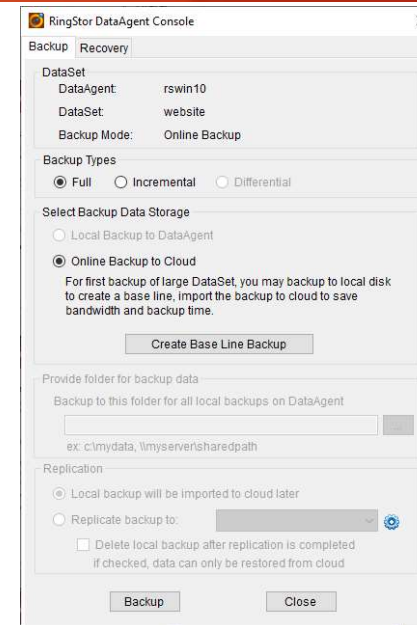
Step 1 – Log into RingStor Explorer

Step 2 – On left pane, select community, DataAgent, and click File Backup to bring up DataSets in right pane

Step 3 – Right click a DataSet in right pane, click Backup and Recover menu

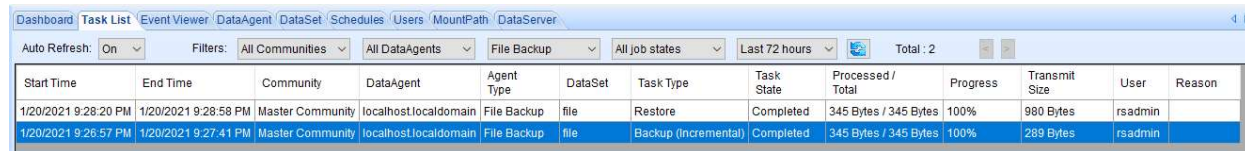
Step 4 – On Backup tab, click Backup button

Step 5 – Set schedule details, notification if needed



Monitor Backup

RingStor Explorer Task List tab shows all jobs



Start Time	End Time	Community	DataAgent	Agent Type	DataSet	Task Type	Task State	Processed / Total	Progress	Transmit Size	User	Reason
1/20/2021 9:28:20 PM	1/20/2021 9:28:58 PM	Master Community	localhost.localdomain	File Backup	file	Restore	Completed	345 Bytes / 345 Bytes	100%	980 Bytes	rsadmin	
1/20/2021 9:26:57 PM	1/20/2021 9:27:41 PM	Master Community	localhost.localdomain	File Backup	file	Backup (Incremental)	Completed	345 Bytes / 345 Bytes	100%	289 Bytes	rsadmin	

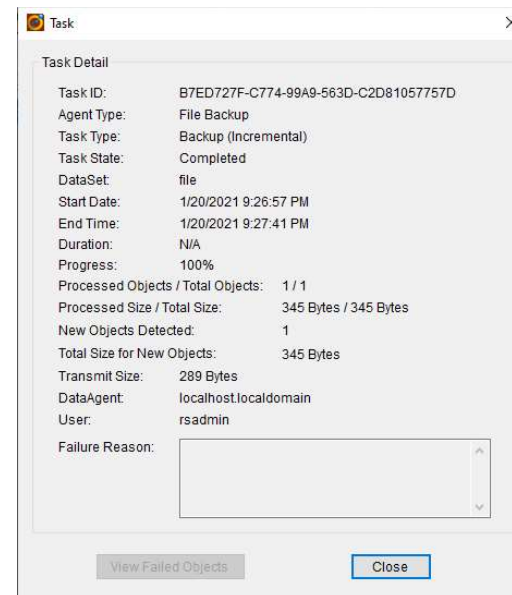
Step 1 – Log into RingStor Explorer

Step 2 – Click Task List tab to view recent jobs

Step 3 – Right click a job to view details

Failure Reason: error encountered

View Failed Objects: files/folders cannot be backed up



Common Failure Reason

Error	Comments	Recommended Action
folder/file does not exist	Backup does not find the file any more when it tries to read it	The file could be a temporary file and got deleted by the time backup tries to read
folder/file cannot be read	Backup cannot read the file	Make sure DataAgent service account has full permission to read the file/folder
content does not exist	The folder/file selected in DataSet does not exist any more	If content is no longer present on DataAgent, remove it from DataSet's selections
content cannot be read	The folder/file selected in DataSet cannot be read	Make sure DataAgent service account has full permission to read the content
content is hidden	The folder/file selected in DataSet is hidden file/folder, but Include hidden folders/files is not enabled	If the hidden content must be backed up, enable "Include hidden folders and files" from DataSet's Filter screen
content is a link	The folder/file selected in DataSet is symbolic link, but Include symbolic link is not enabled	If the symbolic link must be backed up, enable "Include symbolic link" from DataSet's Filter screen
content is a junction	The folder/file selected in DataSet is a junction folder	Junction folder cannot be backed up, remove it from DataSet's selections
task fail to index	The local index for this DataSet on DataAgent is corrupted	The next backup will try to restore index from RingStor Vault. If it fails, log into RingStor Explorer, right click the DataSet, select "Restore Cloud Index to DataAgent"

Logs

RSDataAgent.log - DataAgent service logs

RSAgentFileSystem_<DataSet> - Logs for DataSet. DataSet's name is appended to the log file name

Download Logs

Log into RingStor Explorer, open Task List tab on right pane, right click the job, select Download Logs from DataAgent

