
RingStor Cloud – Backup via SSL Connection

Following are steps to configure RingStor for backup via SSL (Secure Socket Layer) connection for enhanced security.

1. RingStor Cloud End Point (CEP)

Make sure allocate a port as SSL port for CEP. CEP will automatically detect and choose cipher suite for SSL connection.

Use notepad to open <CEP install folder>\conf\cloud.properties file, add follow lines into this file:

```
sslenabled=1  
sslport=<allocated SSL port>  
sslthreadpoolsize=200
```

Save the file, and restart CEP service.

Please note the regular port (default to 9000) is still needed for other RingStor components.

2. Enable RingStor DataAgent with SSL Backup

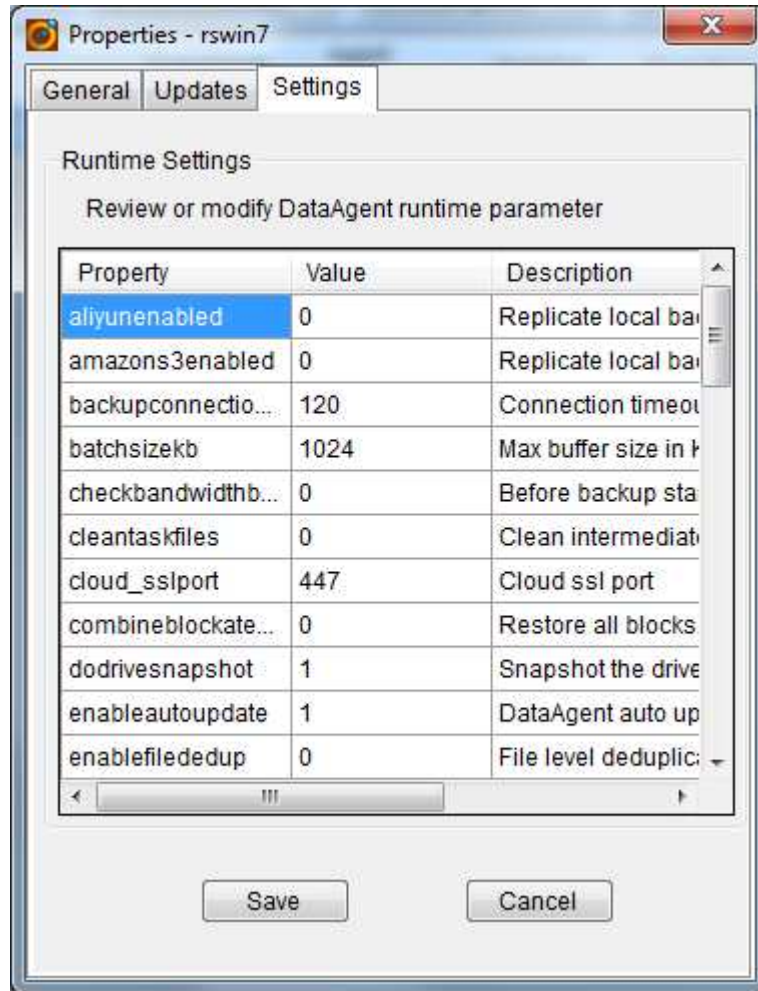
2.1 For Existing DataAgent

From RingStor Explorer, locate the DataAgent, right click to open Properties window:

Set cloud_sslport to the SSL port

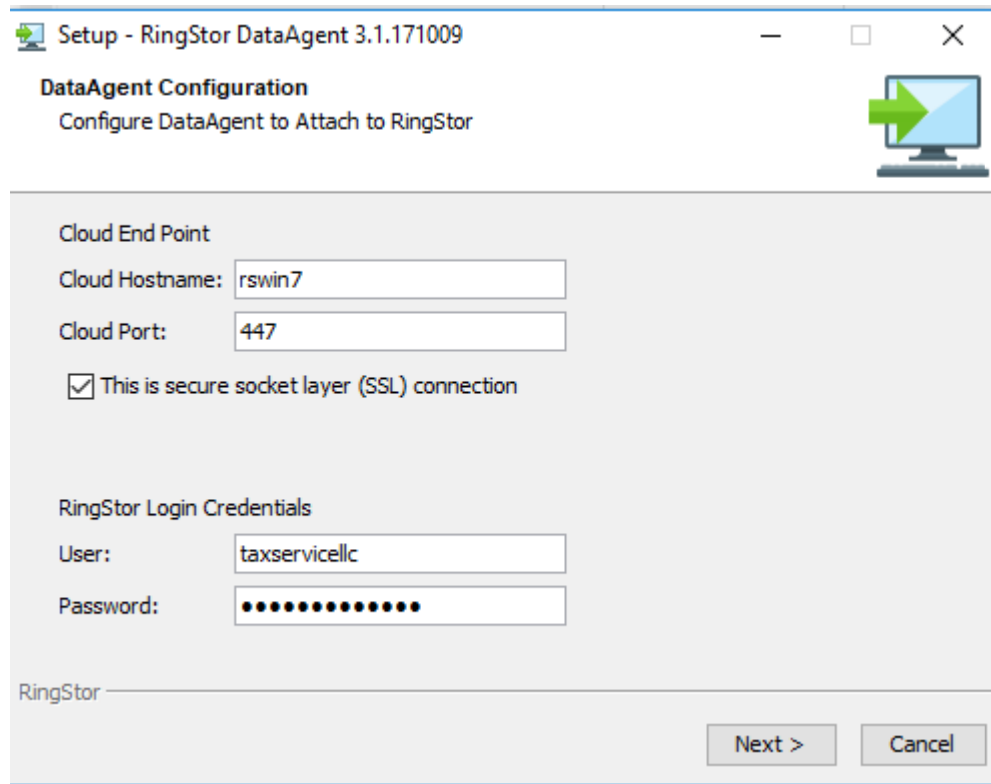
Set sslenabled to 3

Click Save.



2.2 For New DataAgent

At time of installation, select “This is secure socket layer (SSL) connection” as shown below:



The screenshot shows a Windows-style window titled "Setup - RingStor DataAgent 3.1.171009". The main heading is "DataAgent Configuration" with the subtitle "Configure DataAgent to Attach to RingStor". The window contains the following fields and options:

- Cloud End Point**
 - Cloud Hostname:
 - Cloud Port:
 - This is secure socket layer (SSL) connection
- RingStor Login Credentials**
 - User:
 - Password:

At the bottom right, there are two buttons: "Next >" and "Cancel".

Please make sure Cloud End Point has already been configured with SSL in step 1.