

## RingStor Cloud – Base Line Backup

RingStor base line backup may be used in following scenario:

- \* **DataSet's first full backup is large in size and**
- \* **Network speed between DataAgent and Cloud is limited or not be used to transmit large amount of data**

### 1. Create the DataSet

If previous backup attempts have been made but unsuccessfully, delete old DataSet to free up storage used in cloud. Then use RingStor Explorer to create a **NEW** DataSet with same contents.

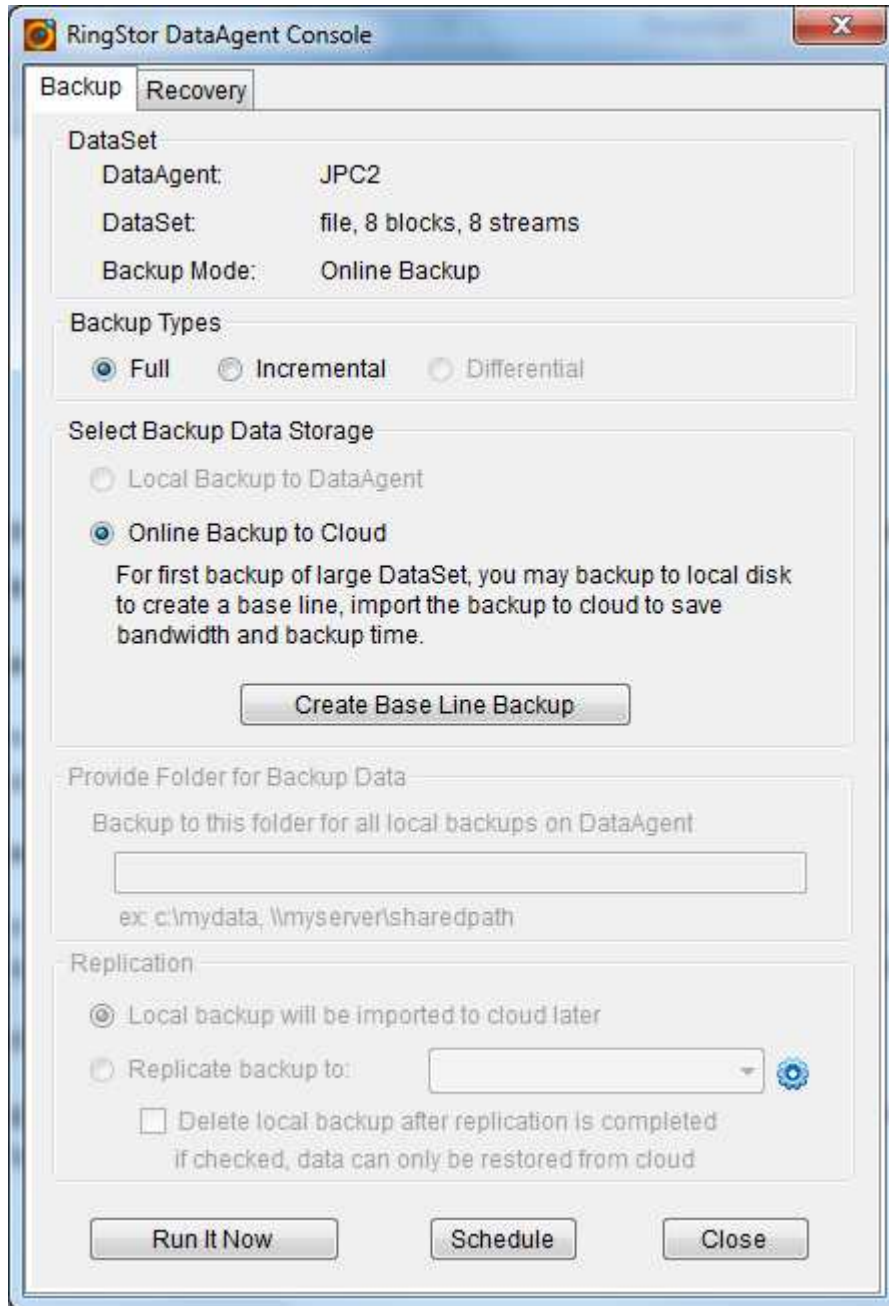
### 2. Connect storage device to DataAgent

Connect a storage device, such as small NAS, USB drive, to DataAgent. If DataAgent is virtual, connect device to other machine and create a UNC path so DataAgent can read and write to the device.

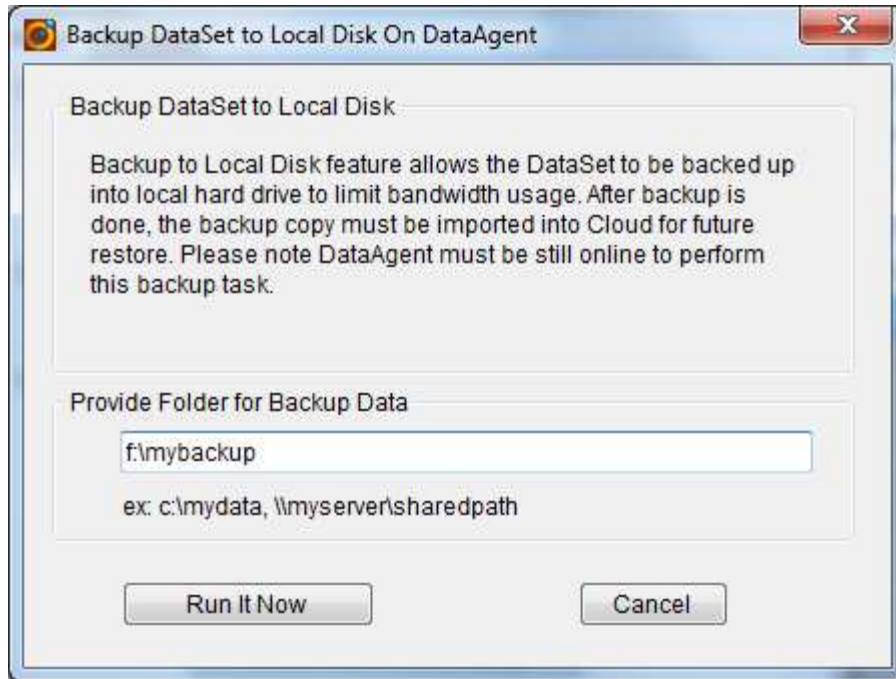
**Important**, the device must have enough free space to store the base line full backup.

### 3. Start base line backup

From RingStor Explorer, right click DataSet to bring up "Backup and Recover" menu as shown here:



Click “Create Base Line Backup” button to bring up the window below:



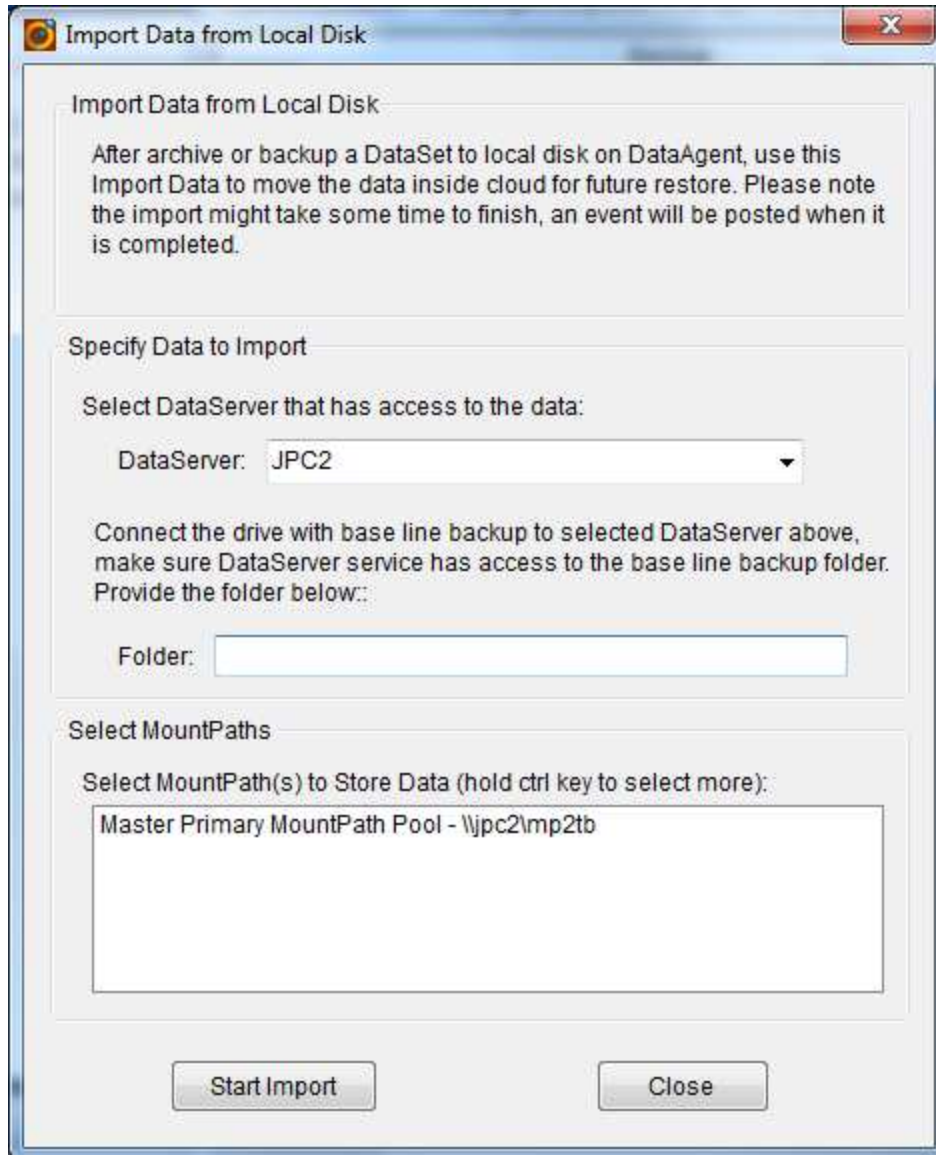
Provide the path to the device connected in Step 2, then click “Run It Now”, and wait until backup completes.

#### **4. Connect the device to a DataServer in cloud**

After base line backup is completed, disconnect the device, and take it to cloud and connect it to a DataServer in cloud. If DataServer is virtual, connect device to other machine and create a UNC path so DataServer can read and write to the device.

#### **5. Import base line backup to cloud**

From RingStor Explore top menu, Data -> Import Data From Local Disk:



Select the DataServer the device is connected to.

Provide the device path in folder field

Click and select MountPath(s) where the base line backup will be moved

Click "Start Import" to kick up the job.

The Data Import job will be shown on task list in RingStor Explorer, after it is completed, base line backup is imported into cloud successfully.

## 6. Schedule online incremental backup

■  
You may schedule incremental backup afterwards.