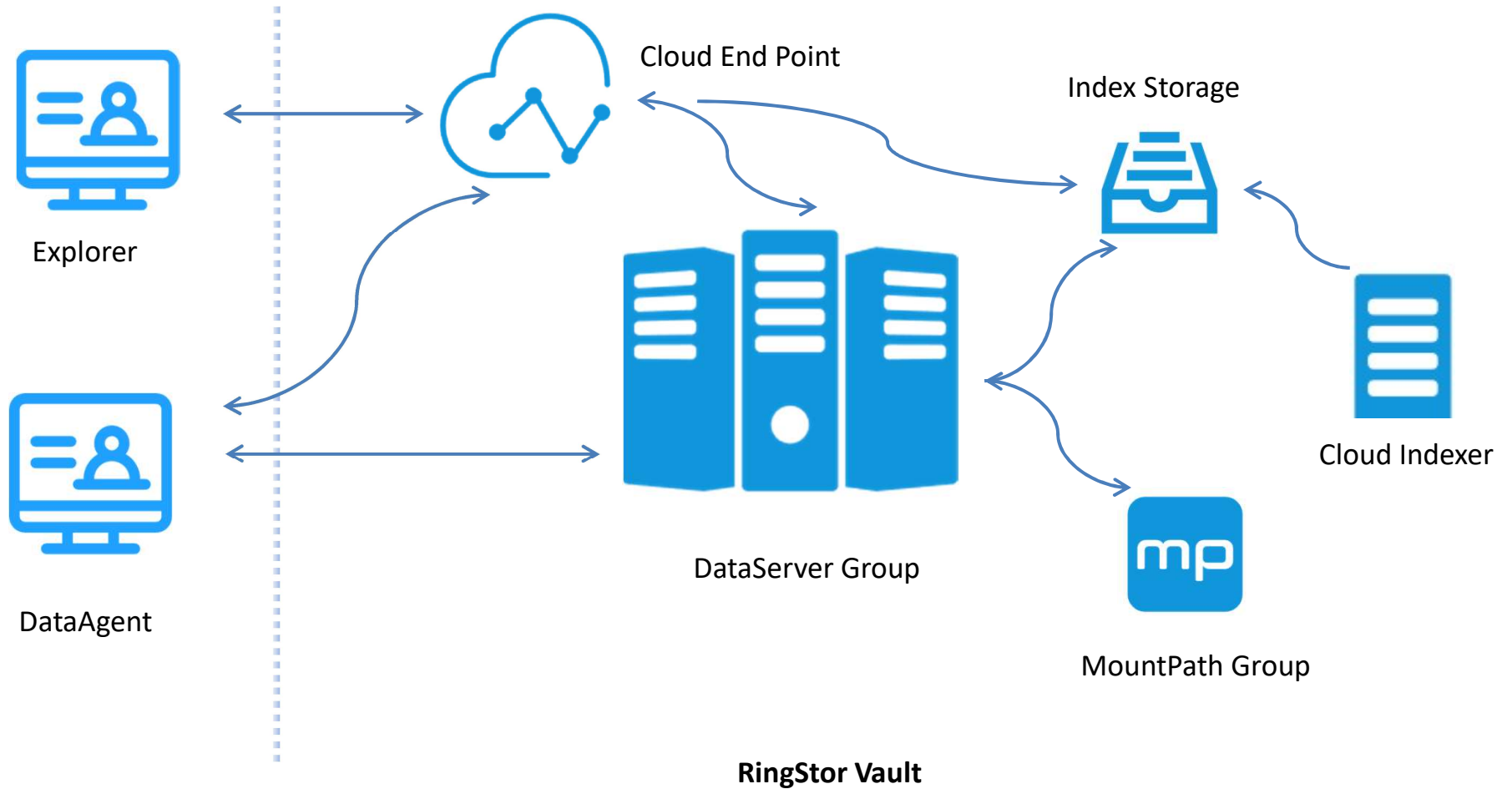


RingStor at-a-glance

- RingStor Vault**
 - Server-side RingStor software
 - Installed in same network
 - Three components:
 - Cloud End Point – manage configuration for RingStor
 - Cloud Indexer – process backup index
 - DataServer(s) – one or more to process backup and restore

- RingStor DataAgent**
 - Installed on client's computer
 - Access RingStor Vault for backup and restore

- RingStor Explorer**
 - Installed on any Windows computer
 - Provide a graphic user interface to manage RingStor
 - Multi-level user support



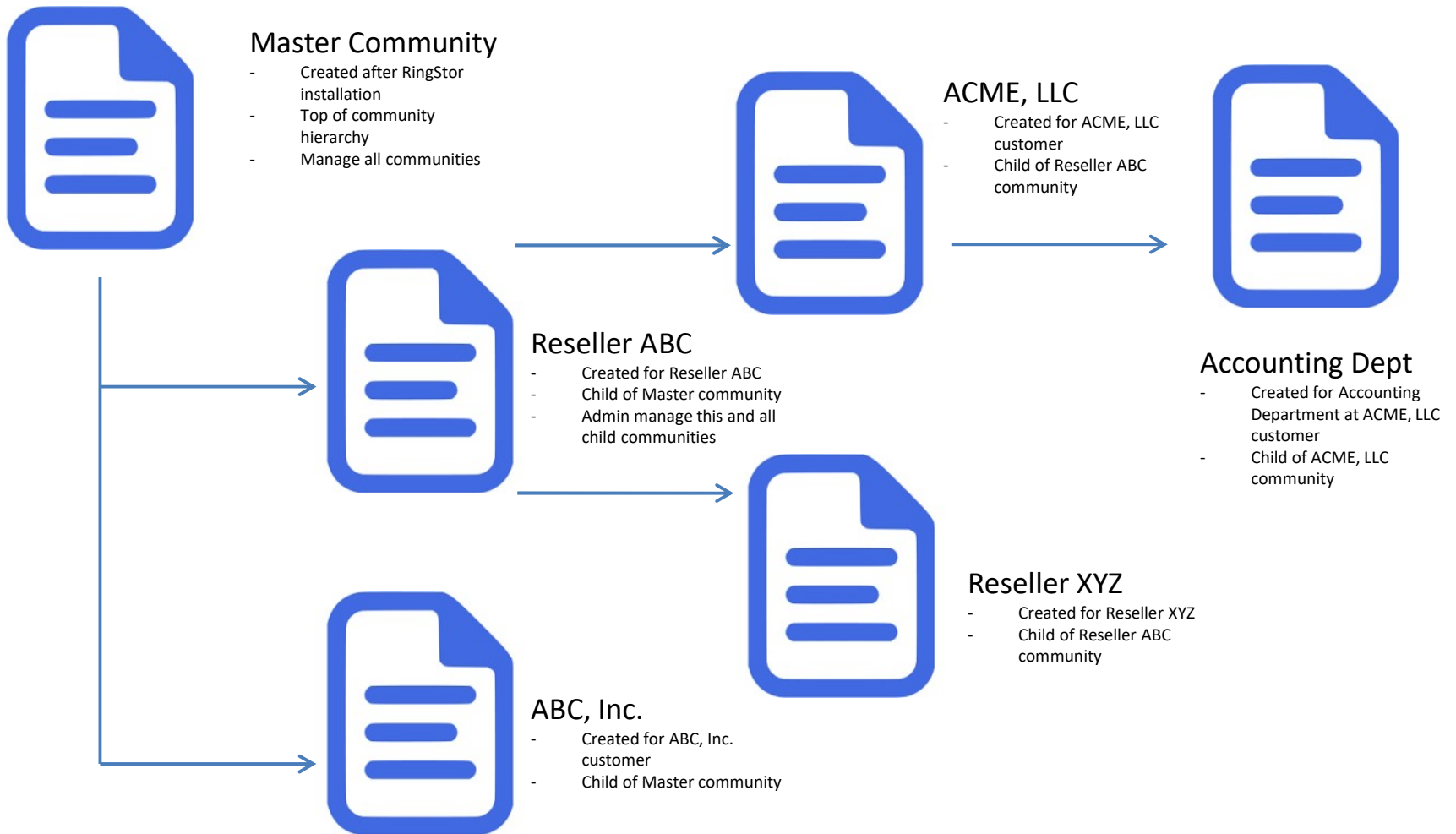
RingStor Community and User

Community

- A logic entity maps to a group, such as reseller, client, department, etc.
- Keep own configuration and users
- Unlimited level to add child and grandchild communities
- Child community can inherit parent's configuration

User

- Belong to a community
- User can be in admin, backup admin, user or monitor role
- User can manage child communities with given role



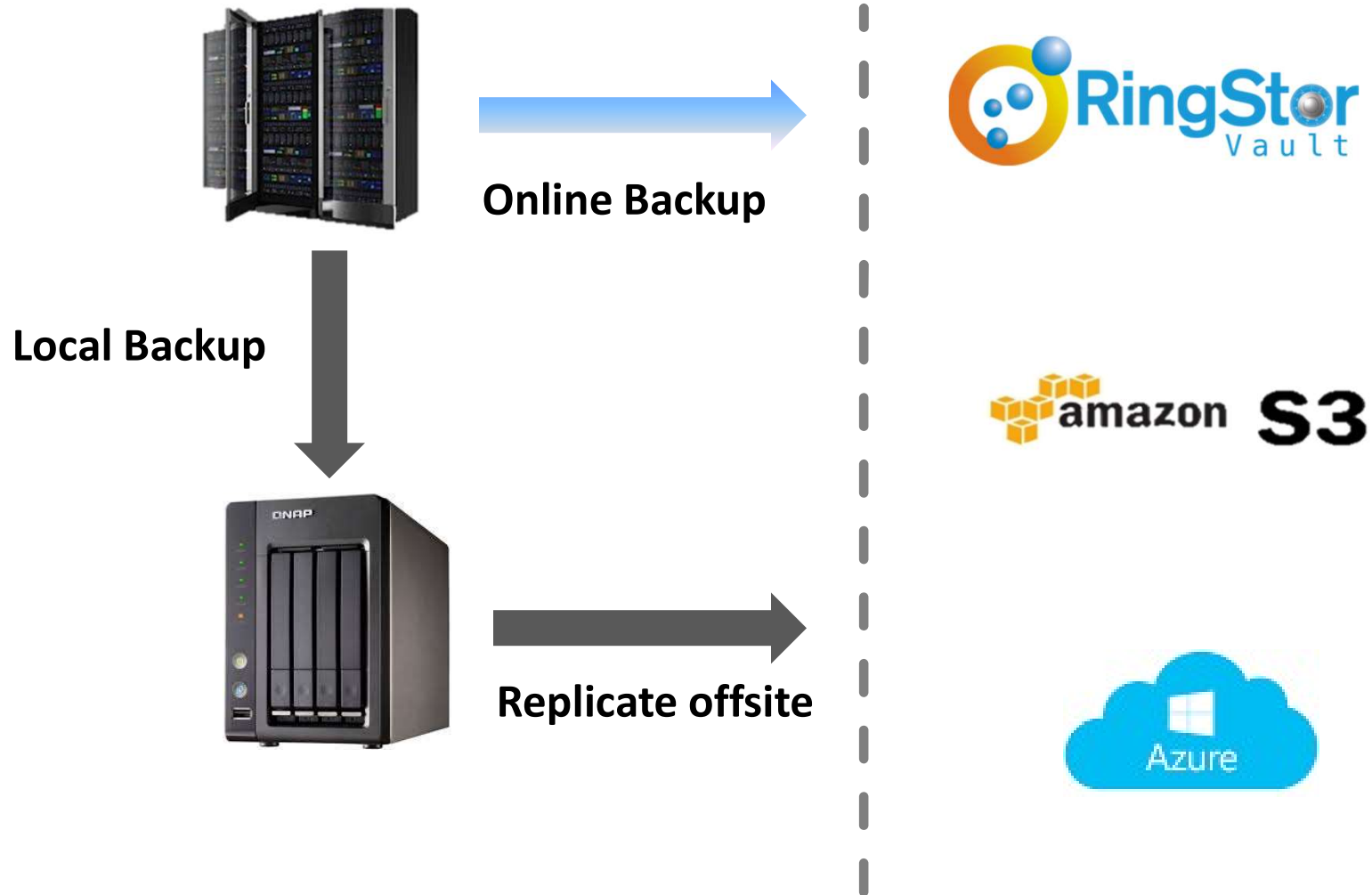
RingStor User

- Administrator**
 - Manage all aspects of the community and all its child communities, including allocate licenses to child communities.

- Backup Admin**
 - Install DataAgent software, setup backup scheduls on all DataAgents, plus create User

- User**
 - Install DataAgent software, manage backups on own DataAgents

- Monitor**
 - Read only mode





gentoo linux



FreeBSD[®]





